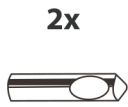


INSTALLATION INSTRUCTIONS

If you have any problem, please contact a professional technician for installation.

Mount the wall hung toilet bowl only on a pre-installed and pre-built frame. Make sure you have the couplings (connecting pipes) for inlet and outlet (self-contained with the frame).

WARNING: the product is heavy and fragile, please handle it carefully. Otherwise, it may cause personal injury, property damage, or breakage. Please prepare enough dry space and the necessary tools: saw, file or sandpaper, slip paste, soap or dishwashing liquor, tape measure, pencil or marker.



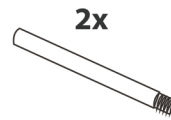
Pins



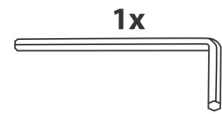
Internal fastener



Auxiliary spanner



Allen screws in plastic tube

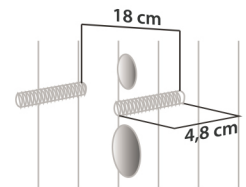


Allen wrench

The wall hung toilet bowl should only be installed on a pre-installed and pre-built frame.

The bolts in the frame used to mount the bowl should be positioned appropriately for the toilet bowl to be mounted.

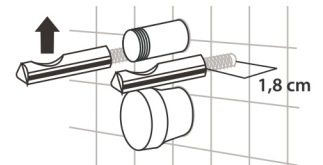
For this model, the bolt spacing is 18 cm, and the protrusion of the bolts from the plane of the building wall is 4.8 cm.



Insert the prepared fittings as far as possible into the corresponding pipes in the frame (don't forget the washer).

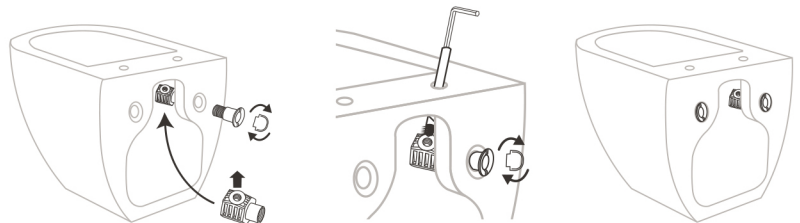
Screw the pins onto the mounting bolts in the frame.

The pins should be screwed in so that the visible part of the bolt is 1.8 cm and the grooves in the pins are facing up.

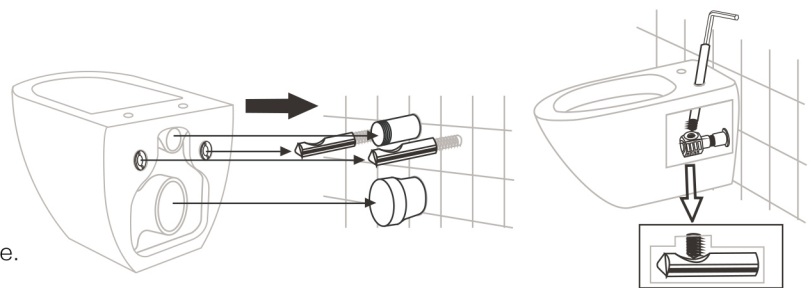


Screw the fasteners into the mounting holes of the bowl. Place the internal fastener inside and the outer fastener outside the bowl, tighten them using the auxiliary spanner, but do not tighten fully. Position the internal fastener with the Allen screw with its hole facing up.

Put the Allen screw in plastic tube through the top hole for mounting the plate and use the Allen wrench to screw it a little into the fastener. Now screw the outer fastener fully into the internal fastener - make sure it is not loose but not forced. Loosen the Allen wrench and take it out. Repeat the above steps for the second fastener.



Carefully and slowly hang the toilet bowl. Ensure that the toilet bowl is fully against the wall and that the fittings are fully installed in their place (don't forget the washer). Insert the Allen screw with plastic pipe through the upper holes for mounting the plate and tighten them gently using the Allen wrench. The Allen screw should enter the grooves in the pins. Pull out the plastic pipe.



Caution in use

- 1) Use warm soapy water and a damp cloth to clean the surface. Dry with a clean cloth.
- 2) For convenience, the toilet seat and lid can be removed before cleaning.
- 3) Never use solvents, remover, abrasives, bleach, acids, strong detergents, aggressive chemical cleaners or solvent cleaners on the product.
- 4) Do not open or close the toilet seat and lid by force. Otherwise, it may cause damage to the product.
- 5) Do not pour hot water into the cold toilet bowl. Otherwise, it may cause damage to the product.
- 6) Do not step on the edges of the toilet, toilet seat or lid.
- 7) Do not place lit cigarettes or cigarette butts on the toilet seat or lid.
- 8) Do not drop any heavy objects on the toilet, toilet seat or lid.
- 9) If the toilet or toilet seat is damaged or cracked, stop using it immediately and replace it. Otherwise, serious injury and property damage may result.
- 10) It is recommended to regularly check the accessories of the toilet seat for safety and tightness.