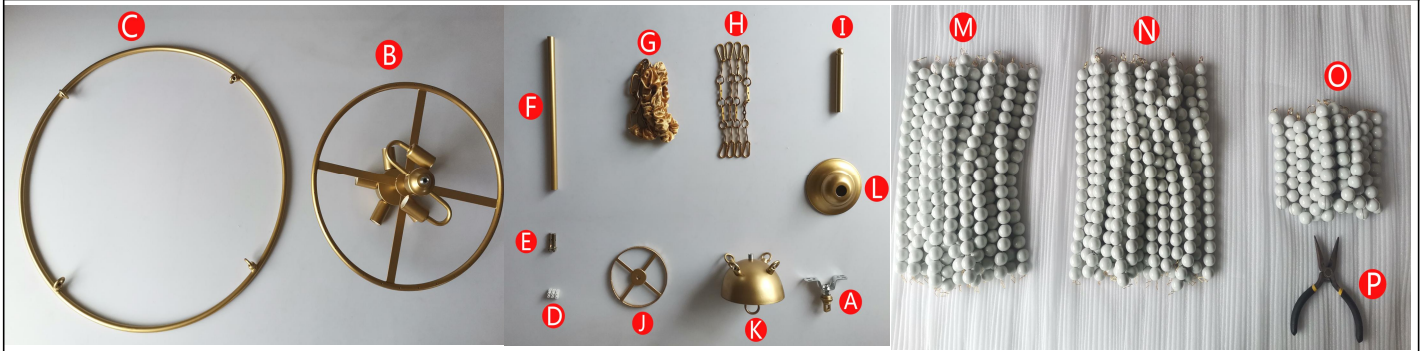


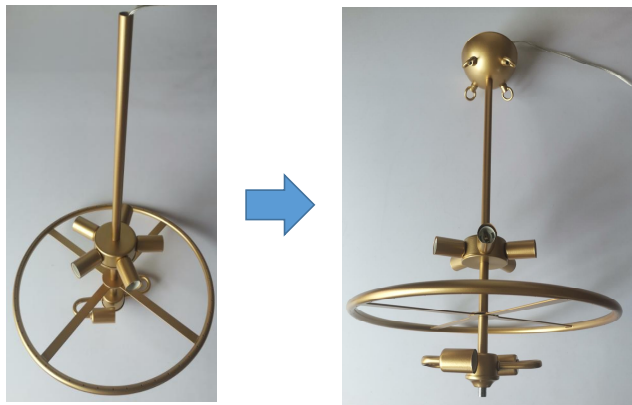
Installation Guide

Picture 1



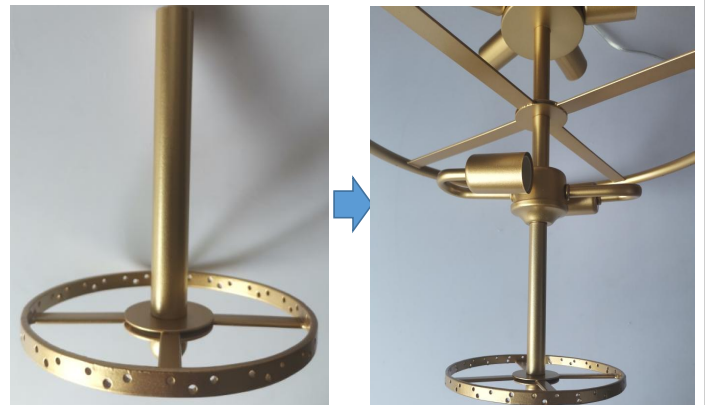
Parts List: A*1; B*1; C*1; D*1; E*2; F*1; G*1; H*4; I*1; J*1; K*1; L*1; M*52; N*32; O*20; P*1

Picture 2



Step 1: Tighten the KB connection with F.

Picture 3



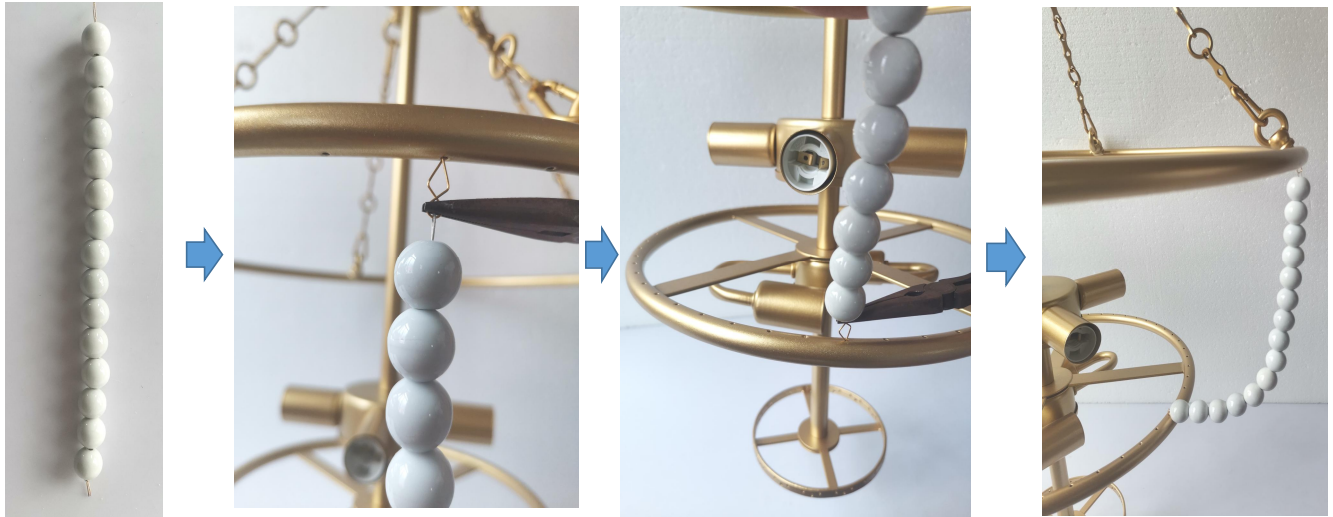
Step 2: Install J to the bottom of B with the I connection.

Picture 4



Step 3: Install it as shown.

Picture 5



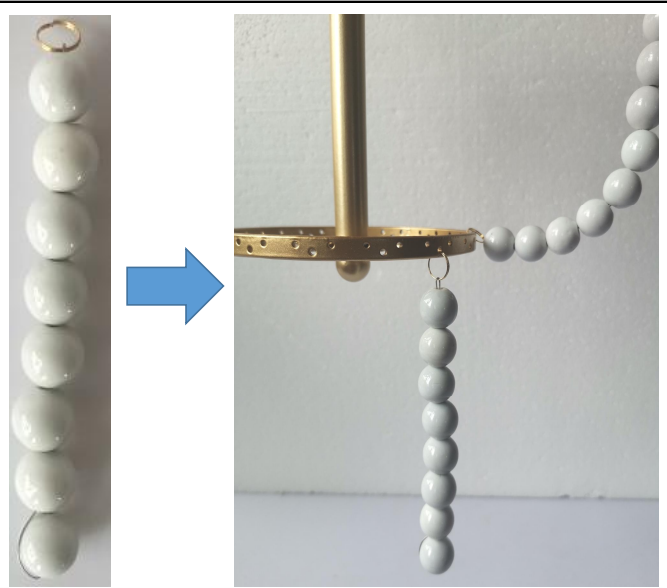
Step 4: Use the P tool to connect M between lamp bodies 1 and 2.

Picture 6



Step 5: Use the P tool to connect N between lamp bodies 2 and 3.

Picture 7



Step 6: Hang O on the lamp body J.

Picture 8



Completion.