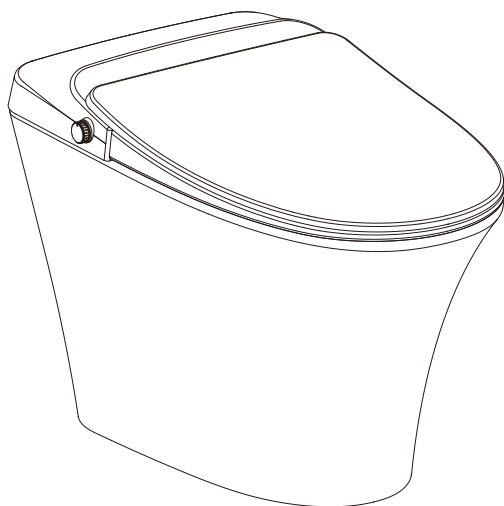


Smart Toilet

USER MANUAL

Model No: 318GE



Edition: V 2023.02.15

- Before beginning installation, read all instructions first. Save these instructions for future use.

Product functions

Heated Seat, Soft Night Light, Energy Saving, Deodorization, Warm Air Drying, Rear Wash, Front Wash, Defecation Wash, Moving Cleanse, Menstrual, Cold & hot SPA, Children Wash, One Touch, Nozzle Self-clean, Nozzle Cleaning, Auto Flush, Foot Induction Flush, Remote Control Flush, Power-off Flush, Adjustable Water Temperature, Adjustable Seat Temperature, Adjustable Air Temperature, Adjustable Water Pressure, Tube Adjustment, Auto Open Seat/Cover.

Using guide

Please follow up the process below before product operation.

1. Turn on the valve.
2. Plug the power cord into electrical inlet.
3. If power button indicator lights, the bidet seat is good to use.

Standby Model

While off the seat, touch and hold the remote control stop/power button for 3s or more to enter standby mode. In standby mode, press the stop/power button to exit standby mode. In the cleaning mode, press the stop/power button to exit the cleaning mode.

Foot Induction Flush

When leaving the seat, trigger the foot feeling signal for the first time, it will automatically flip the seat; trigger the second time, then will flush 1 time automatically. When seating, can't flush automatically.

Microwave Induction

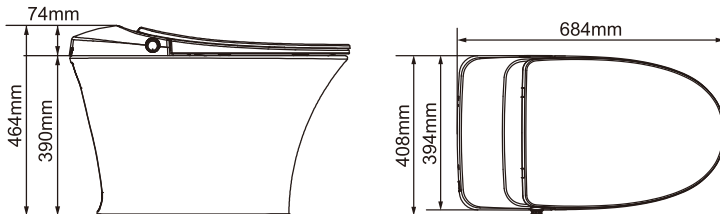
When leaving the seat:

- ① If the cover is closed, when there is no object entering microwave induction region after holding for 10 seconds. If there is any object enters the microwave induction region, it will automatically flip the cover.
- ② When leaving the seat, if there is no object entering microwave induction region after holding for 5 minute. It will automatically close the cover. If the seat is opening, it will close the seat and cover.

Packing list

No.	Name	Quantity	No.	Name	Quantity
1	Smart Toilet	1	7	Remote Control User Manual	1
2	User Manual	1	8	Remote Screw	2
3	Remote Controller	1	9	Flange	1
4	Remote Expansion Nut	2	10	G1/2 To G3/4 Angle Valve	1
5	AAA Battery	2	11	9V Battery	1
6	Battery Box	1	12	Water Flow Restrictor	1

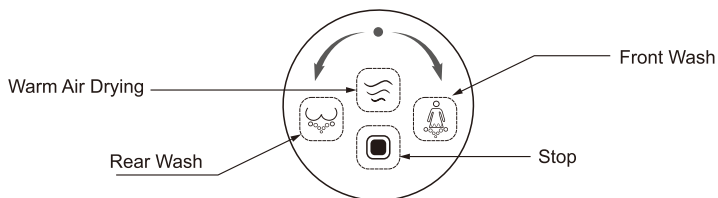
Product size



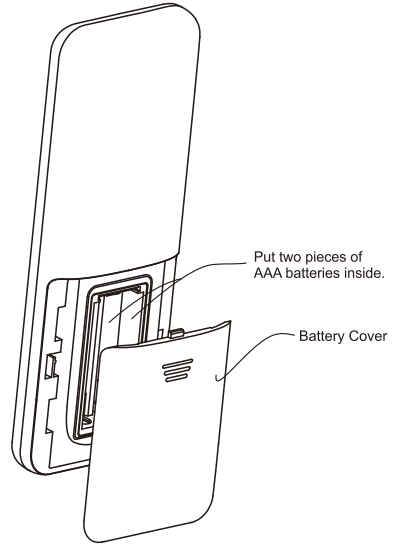
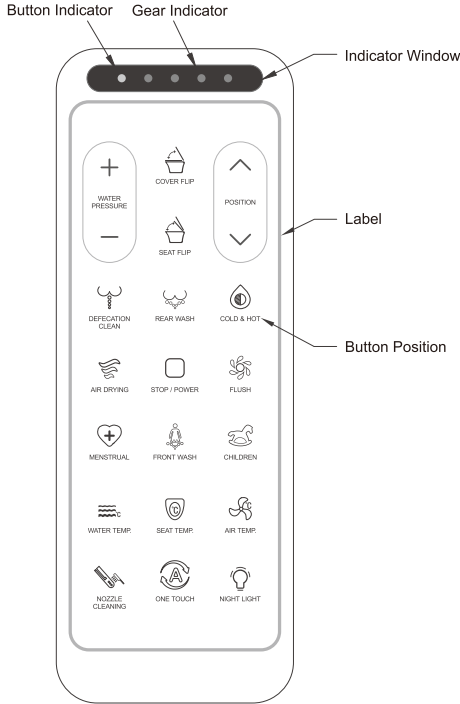
Technical data

Rated voltage		110-120V~	
Rated frequency		60Hz	
Rated power		1100W (15°C±1°C inlet water temperature)	
Length of wire		1.5m	
Water supply mode		Directly connected to the channel	
Ambient temperature		About 3°C to 40°C	
Water supply temperature		About 3°C to 35°C	
Water pressure range		0.12MPa-0.8MPa	
Safety devices		Electrical leakage protector, seated sensor, water over-pressure protection device	
Decontaminating apparatus	Heating method		Instant heating
	Warm water temperature		Four grades (Room temperature to 40°C)
	Spray volume	Buttock cleaning	About 0.5 to 0.8L/min
		Women-only	About 0.5 to 0.8L/min
	Warm water heater		1100W
Safety applause		Temperature sensor, temperature fuse, temperature jumper, flowmeter	
Drying device	Wind speed		>4m/s
	Air temperature		Four grades (Room temperature to 59°C)
	Drying heater		200W
	Safety devices		Double-sheet-metal switch, temperature fuse, temperature sensor
Deodorizing device	Deodorant		Activated carbon
	Power consumption		1.5W
Thermal seat	Seat temperature		Four grades (Room temperature to 40°C)
	Seat heater		45W
	Safety devices		Temperature sensor, temperature fuse
	Switch structure		Damping slowdown

Rotary Button



Remote control user manual



Remote control code matching steps:

1. Power off the bidet,
2. Press and hold STOP/POWER and NOZZLE CLEANING buttons simultaneously for about 2 seconds , until the 4 indicator lights are turned on and flashing.
3. Turn on the bidet
4. When the remote control is connected to the bidet , the third and fourth indicator lights will be on, it means code matching succeeded. If not succeeded , try again after 15 seconds.

Remote control button description

1. Main function



Rear Wash
Short press: start wash buttocks.
Double press: start / stop mobile wash.



Front Wash
Short press: start female wash.
Double press: start / stop mobile wash.



Warm Air Drying
Short press: start warm air drying.



Stop Current Work
Short press: quit current wash or drying.
Long press: turn the toilet power on or off.

2. Parameter adjustment



Adjust water pressure
Short press "+", water pressure grade +1,
short press "-", water pressure grade -1.



Adjust tube front and rear position.
Short press "^", tube position grade +1,
short press "v", tube position grade -1.



Adjust seat temperature
Short press: cyclically adjust seat temperature.



Adjust water temperature
Short press: cyclically adjust water temperature.



Adjust air temperature

Short press: cyclically adjust air drying temperature.

3. Auxiliary functions



One-touch completes rear wash, flush and warm air drying.
Short press: start automatic "One Touch" mode.



Clean water column shoots into the end of the anorectal to help defecation.
Short press: start defecation clean.



Customized the appropriate parameters for children, wash the buttocks.
Short press: start children care cleaning.



Cold & Hot SPA: water alternately massages and washes.
Short press: start cold & hot massage.
Double press: turn mobile cleaning on or off.



Cleaning the genitals with customized parameters during woman's menstrual period.
Short press: start menstrual care wash.
Double press: turn mobile cleaning on or off.



When not seated, stick out the nozzle for daily cleaning.
Short press: start nozzle cleaning.



Night light during night
Short press: turn night light on or off.
Long press: enter or exit energy saving mode.



Toilet Flush
Short press: toilet flush, no flush during wash process.



Seat Flip
Short press to open or close the seat.



Cover Flip
Short press to open or close the cover.

4. Others

Light sensor

- 1 minute after manually turning on the night light, the light sensor is automatically turned on, and then according to ambient brightness automatically adjusts the night light on or off.
- Manually turn off the night light, the light sensor is off.

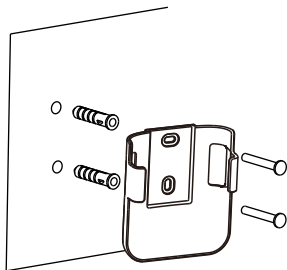
Energy saving

After the user leaves the seat, intelligently adjust the heating power of the seat.

Intelligent Memory

the smart toilet can remember the last time the user used the cleaning habit, intelligent start the nozzle moving clean.

Remote control installation steps



- 1 Determine the screw position.
- 2 Put the expansion nut.
- 3 Remove the sticker on the back of the remote control holder, Stick it to the right place on the wall.
- 4 Screw on.



Insert the remote control into the holder



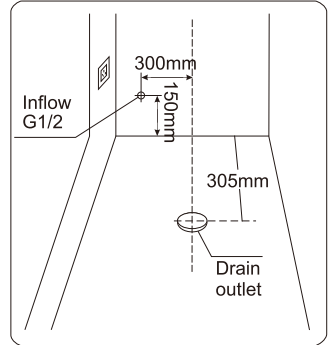
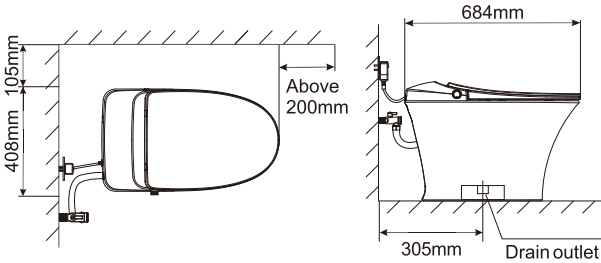
Completed

Precautions before installation

1. Installation space

- ① To ensure that there is enough space for installation at the same time, please confirm the door switch does not affect the product's installation. The distance of water inlet pipe to the ground should be more than 150mm.
- ② Before installation, please confirm the location of the outfall and wax seal (For specific location please refer to the logo shown on the right)

2. Installation diagram



3. Installation Tool :

Glass glue , screwdriver, wrench, Auxiliary plumbing tape.

4. Water pressure test

Prepare a 5L container, open the valve , check if it can fill up 5L of water within 15 seconds.

Product installation methods

1. The installation of flanges and ceramics

- ① Place the flange on the sewage outfall, and make a good seal. (See figure 1)
- ② Place the ceramic sewage outfall on the flange. (See figure 2)
- ③ After adjusting the toilet position and installing smoothly, make glass glue seal between the toilet body and the ground.

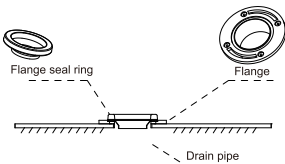


Figure 1

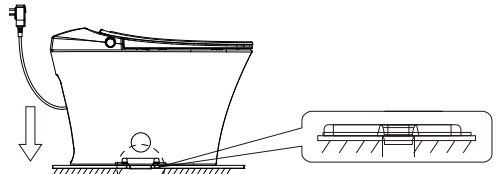

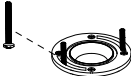
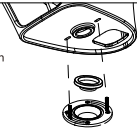
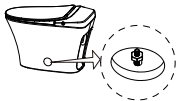


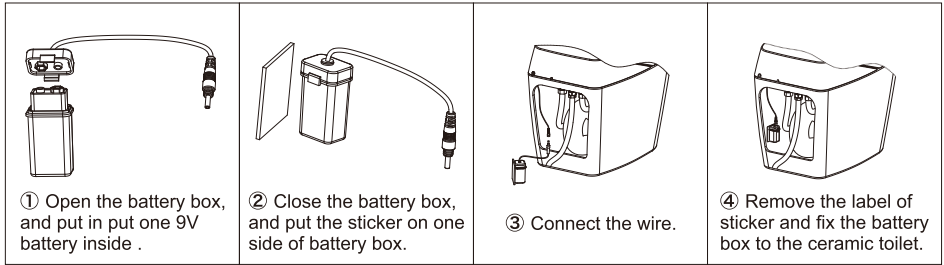


Figure 2

<p>1. According to the positions of the four screw holes on the flange, punch four holes in the corresponding positions of the floor, and screw in the screws to fix the flange.</p> 	<p>2. Put the bolt into the groove of the flange, align the flange with the sewage outlet, and fix it with screws.</p> 	<p>3. Put on the flange sealing ring, and align the bolts with the mounting holes through the bottom of the toilet.</p> 
<p>4. Adjust the position of the toilet and tighten the nut. (not too tight to prevent the ceramic from bursting)</p> 	<p>5. After the ceramic installation is fixed, put the cover on the side of the ceramic.</p> 	<p>6. The installation is complete.</p> 

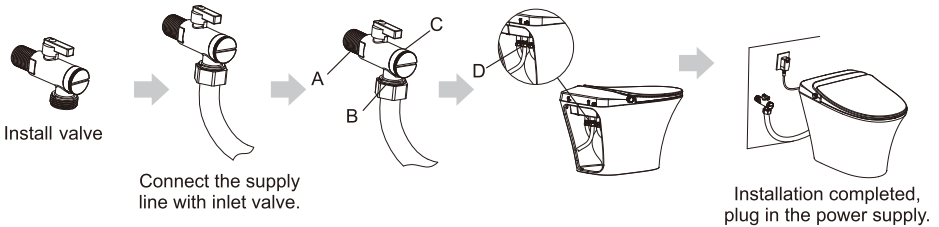
2. Battery Installation



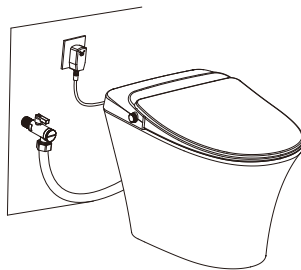
3. Connect the water supply pipe

⚠ Before installing the valve, please drain all the impurities and sewage in the pipes. (Discharge the water for 1 to 2 minutes)

① When the water supply valve is closed, remove the old angle valve and replace it with the machine-equipped angle valve. Please use the supply hose included. Do not use the old one. ② Connect the supply line with inlet valve. ③ After the machine is installed, open the knob to detect no leakage at A, B, C and D. ④ Inspection is correct, plug in the power supply, press the "manual flush" button to confirm the siphon effect of sewage.



4. Installation completed



- ① Plug in the power and press the manual flush button to confirm the flushing effect.
- ② Put the wet towel on the seat ring sensor mark position.
- ③ Check if each function is normal by remote control .

Precautions for use

⚠ Attention	It may cause minor injury or damage, be sure to always pay attention.
⊘ Forbiddance	Do not operate forbidden content.
⚠ Enforcement	Must comply with the enforcing content.
⚡ Ground	Connect the ground properly

⚠ Warning	
⊘ Do not disassemble	It is absolutely forbidden to disassemble, repair and transform this product by yourself. It may cause fire, electric shock and other accidents.
⊘ No watering	Do not pour water or detergent on the power plug. It may cause fire, electric shock and other accidents.
⊘ Forbiddance of fire	Do not bring lit cigarettes or burning species close to the product. It may cause a fire.
⊘ Forbiddance	Please do not continue to use the product when the product fails. Please contact the after-sales service staff for maintenance. When the following situation occurs, please remove the power plug and close the inlet angle valve. 1. Leakage from the inside of the product line; 2. The product is unusually hot; 3. The product makes an abnormal sound and smell; 4. The product is burnt. If the product is still used in the event of malfunction, it may cause problems such as fire, electric shock, water inflow in the room. (The normal life of this product is six years, the continued use beyond the service life may lead to accidents.)
	Only tap water can be used. Otherwise may cause infectious dermatitis and other diseases.
	Do not use loose power outlet. It may cause a fire or electric shock.
	Please use the power outlet within the specified conditions (110-120V~, 13A, 60Hz socket). Do only use 110-120V~ power supply. Using power beyond the socket regulations may cause the socket to heat up and cause a fire.
⚠ Enforcement	Do not damage the power cord and seat wire. 1. Do not damage, do not process, do not heat; 2. Do not force bending, do not curly tied, do not pull; 3. Do not put heavy objects on the power cord and the seat lid connection, ignoring product damage and continuing to use may result in fire, electric shorts and other conditions.
	1. This product belongs to the electrical products, do not put it in places where there is water or the places of high humidity. When used in the bathroom, please install ventilation fan or ventilation port to keep the bathroom in good air circulation. Otherwise, it may cause a fire or electric shock. 2. If the power cord is damaged, do not disassemble it yourself and must be replaced by the manufacturer or its service department or relative department.
⚡ Grounding	Please check if grounding is done. A product that is not grounded may cause an electric shock in the event of a malfunction or leakage.

⚠ Attention	
⊘ Forbiddance	Forbiddance sitting on the seat for a long time, the seat temperature should be adjusted in low-grade, please note that low-temperature burns. The following personnel should set the seat temperature at low-grade when using the toilet. 1. Children and elderly people who cannot adjust the temperature to the right degree. 2. Patients, persons with disabilities and other people who can not move freely, 3. Lethargic crowd because of taking hypnotics (Such as sleeping pills, cold medicine, etc.) deep drinking and over fatigue.
	Do not forcibly stretch the connecting pipe of the water supply pipe. Otherwise it may cause water leakage.
	Defecation clean function, a special cleaning function, only allowed to use one time whenever you use the toilet, non-repeated use!
	Do not rely on the seat cover or forcibly press the control panel. Otherwise it may result in malfunction or breakage. Forced application of force may cause seat cover and control panel damage, resulting in personal injury.
	Do not place containers containing liquid such as vials, cups, cosmetics, pharmaceuticals, etc. or small metal objects on top of the product. Inadvertent entry into the product may result in fire or electric shock.
	Do not place the product in direct sunlight, otherwise the appearance of products may be aging deformation.
	People with disabilities, mental retardation, etc. (including children) need to use this toilet under supervision, do not let children play with this toilet.
	Do not use the toilet to flush expect shit, urinate and toilet paper, or it may cause toilet jam, sewage overflow.
	Please do not hit the ceramic to prevent damages that result in leakage.
	Please do not use in the environment below 0°C.
⚠ Enforcement	When installing the inlet angle valve, please tighten firmly. Otherwise it will lead to water leakage.
	Prevent damage caused by freezing. Freezing can cause damage to the water hose and product interiors and cause water leakage.
	When traveling for long periods of time or when not in use, please unplug the power plug from the outlet.

	Unplug the power plug when lightning occurs.
	This product is only for bathroom, and should not be used for any purposes other than the ones described in this manual. Otherwise maybe cause to fire, electric shock, personal injury or malfunction.
! Enforcement	Do not allow urine and other contaminants to touch the smart toilet. Doing so may cause odor or cause malfunction.
	Do not forcibly close the seat and seat cover. It is necessary to avoid the collision of the seat lid and the seat cover when turning them. Otherwise maybe cause malfunction. Don't clip to the fingers while seat and seat cover switch, otherwise maybe cause bruise.
	For external maintenance, unplug the power plug from the socket for safety reasons. Otherwise maybe get an electric shock.

Product cleaning and maintenance methods

Warning: waterproof toilet cleaning precautions

- Do not clean the product with your hands in case of damage or failure, to avoid secondary failure.
- Do not use hydrochloric acid detergent, thinner, bleach, benzene or strong detergent to clean the surface of the toilet. Do not allow pesticides, air fresheners and deodorants to stick to the toilet bowl.
- **The body discoloration, cracking and damage caused by the use of the above-mentioned reagents, even within the warranty period also need to paid the services.**

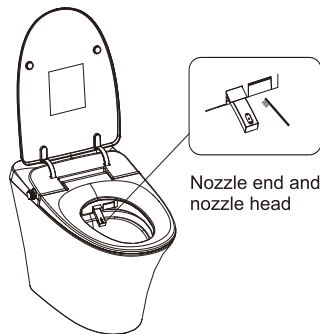
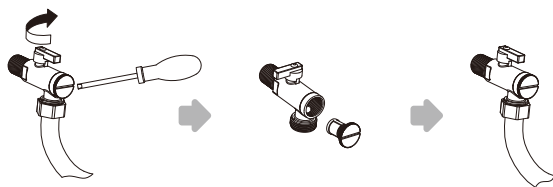
1. Nozzle cleaning

- ① On the machine power mode, do not sit on the seat.
 - ② Press "Nozzle cleaning", entering the manual cleaning nozzle mode. (Can not activate "nozzle cleaning" mode when seated)
 - ③ Please use soft brush or soft cloth when cleaning.
 - ④ After the cleaning is completed, press the stop button or in the seating state, the cleaning tube is automatically retracted.
- **Warning: do not force out or push into the cleaning tube during cleaning, or it may lead to machine failure.**

2. Filter cleaning

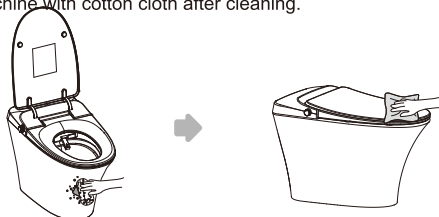
When the water supply valve is closed, cut off the machine water supply, do the following operation.

- ① Shut off inlet valve by clockwise rotation
- ② Unscrew water filter by a coin or slot screwdriver
- ③ Take out water filter and clean by toothbrush or other clensers. Mount water filter back after cleaning.
- ④ Turn on inlet valve by counterclockwise rotation



Toilet appearance cleaning method diagram

- ① Use a soft cloth or sponge stained with neutral detergent to clean the machine.
- ② Wipe the whole machine with cotton cloth after cleaning.



3. Seat toilet management methods in winter

In order to prevent freezing in winter, please follow the following methods to manage.

- ① Check whether the power plug is properly inserted into the socket.
- ② When the bathroom has no heating device, please use cloth to wrap connecting pipes or other insulating materials for insulation.

• **Note:**

Please tighten the filter firmly, otherwise it may cause water leakage.

Do not grab the filter net too strongly as it may distort or rupture.

When blockage blocks the filter, the pressure of the flushing water may not be enough, so please clean the toilet regularly once in three months.

We recommend that you do not use detergent when cleaning. Clean it directly with tap water.

How to deal with common problems

Problems		Check	Handling
Functions does not work at all.		The seat sensing area uses cloth cover, mat and other items.	Please remove the cloth cover, mat and other items.
		Power is cut.	Please wait for power recovery.
		Socket is loose or poor contact.	Plug in, ensure good power supply.
		Whether the power reset button is pressed.	Please press the power button on the toilet.
Flushing	Water doesn't come out.	No water.	Please wait for the water supply to resume.
		Water inlet valve is clogged with dirt.	Open the inlet valve.
		Filter is clogged with dirt.	Please change or clean the filter.
		Whether the water supply tube is bent and clogged.	Eliminate the water supply pipe bending.
	Flushing power is not strong enough.	Water pressure is set at low-grade.	Please adjust the water potential power by "button description" on the remote control.
		Filter is clogged with dirt.	Please change or clean the filter.
		Clean the nozzle to see if there is any blockage.	Please clean the nozzle.
	Water temperature is not high enough.	Whether the water temperature is set at low or normal temperature.	Please reset the water temperature by "button description" on the remote control.
No water supply when flushing.	Press the "Rear Wash" or "Front Wash" key for about 60s, the machine will automatically stop.	Please click "Rear Wash" or "Front Wash" key again.	
Toilet Seat	The heated seat is not heating.	Thermal seat's heating strength is set in the low or off state.	Please reset the seat temperature by "button description" on the remote control.
		The toilet is set in the energy-saving state.	Please exit energy-saving state.
		Whether the power outage.	Please wait for power recovery.

尺寸：148x210mm

材质：普通纸