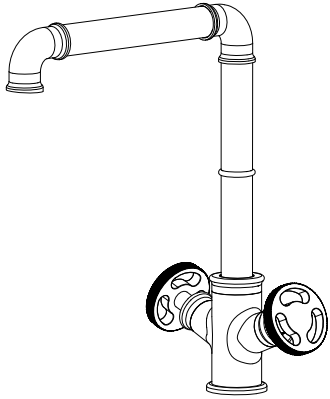
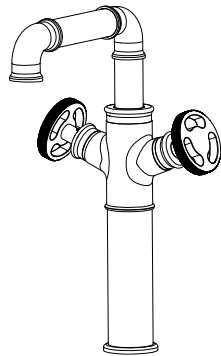
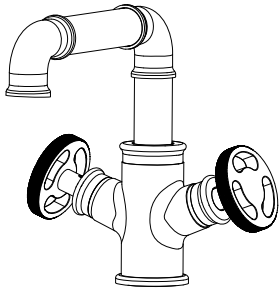


# Single hole double handle faucet Installation instructions



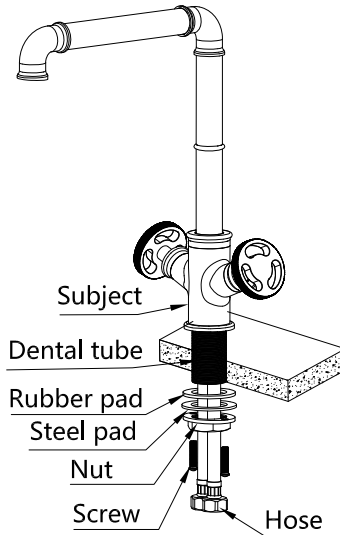
Examples of applicable products for installation instructions



## Hint

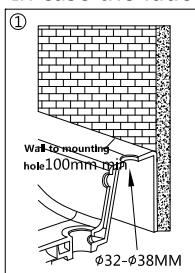
This manual is an example, the actual product shall prevail.

| Serial number | Name    | Quantity |
|---------------|---------|----------|
| 1             | Subject | 1        |
| 2             | Hose    | 2        |
| 3             | manual  | 1        |

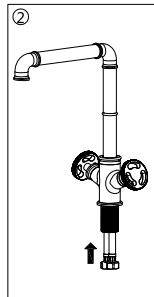


## Installation steps

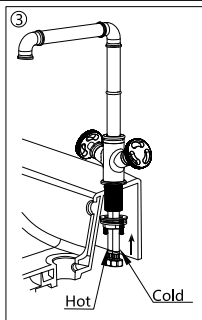
Installation: Please flush the pipeline before installation to remove impurities or foreign objects in the pipeline  
In case the faucet is blocked!



Ensure that the size of the basin installation hole and the distance from the center of the installation hole to the wall meet the requirements of the figure



Install the dental tube and the water inlet hose on the main body



Pass the hose through the basin mounting hole, the base is on the main body and the installation surface of the basin, then attach rubber gasket, steel gasket, nut. Insert the dental tube from below and screw it by hand. Tighten the nut, and then tighten it with a screwdriver. Screws on both sides.

## Parameter

This information is for installation masters or professionals, please give the instructions to users.

Conditions of use:

Can not be used together with non-pressure heaters, used in indoor public health environment

Environment or other similar environments.

Water supply pressure: 0.05MPa~0.5Ma

Recommended water pressure: 0.1~0.5Ma

Working pressure: Maximum 1.0Mpa

Test pressure: 1.6Mpa

Hot water temperature: up to 90°C

Suggested temperature: 60°C

Environment temperature: 5°C~45°C

If the inlet water pressure exceeds 0.5Mpa, a pressure reducing valve must be installed to avoid a large pressure difference between the hot and cold water pipes.

Function: Check whether there is water leakage at the connection position, the parts are intact, and the closing is normal

Maintenance: If necessary, please check and clean all accessories or replace them. Please close the water inlet pipe when replacing.

When installing the valve body, make sure not to miss the rubber ring, ensure that the sealing rubber ring is in the correct position, and then tighten the nut.

## Maintenance

Note: Be sure to close the water pipe and open the handle before removing the faucet. Relieve the pressure and make sure to completely close the water valve switch.

Keep the surface of the product clean and bright, please clean the faucet regularly and follow the following steps:

1. Use rinsing water and a soft cloth to clean the surface of the faucet to get him back to the best Status.
2. Use only the following cleaning agents to clean oil stains:
  - Soft liquid cleaner
  - Colorless glass cleaner, easily soluble non-corrosive powder cleaner
  - Does not corrode clean wax
  - Do not use cleaners, ammonia, bleach that can scratch, Acid, vinegar, alcohol, solvent, etc.
3. After cleaning, rinse off the cleaner on the surface of the faucet with water in time, Wipe dry with cotton cloth.
4. Remove the bubbler regularly and rinse with clean water to avoid clogging.