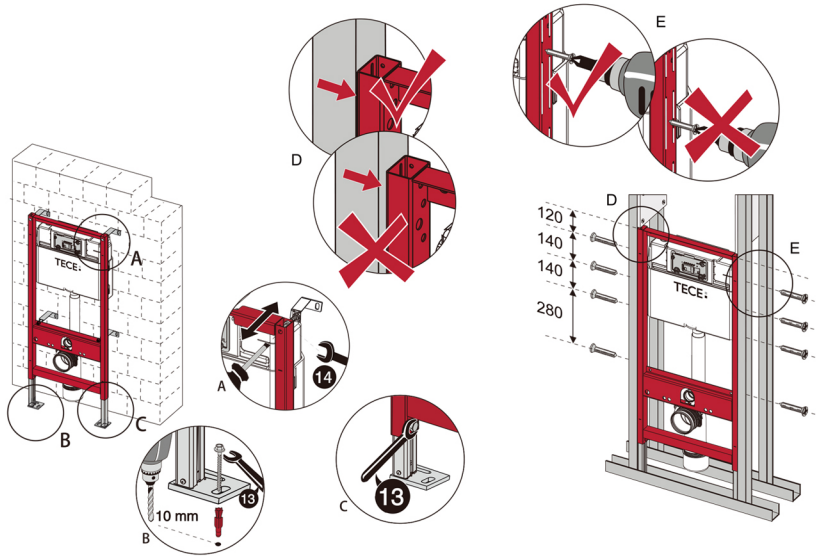
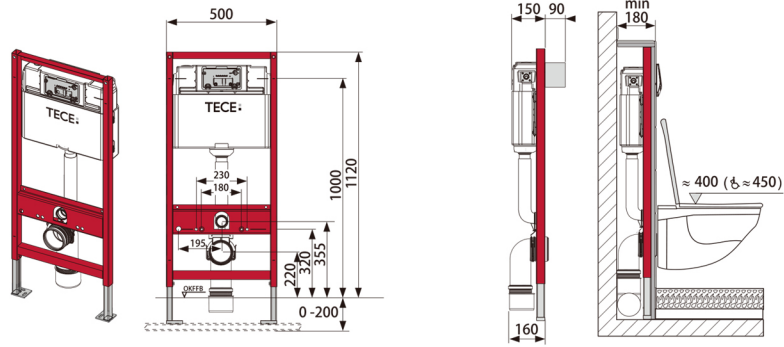


**1**

# **Tank Installation**

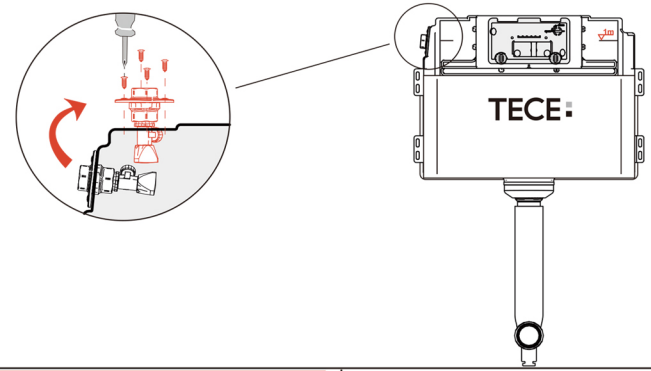
# TECEprofil – WC 1120 mm

9 300 200/9 300 201/9 300 241/9 300 246



**TECE**

# TECEprofil – WC 1120 mm



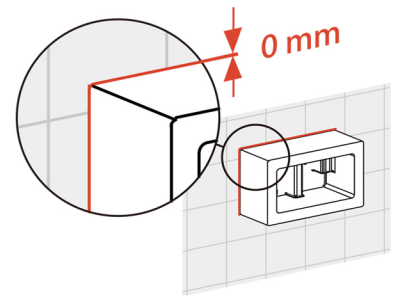
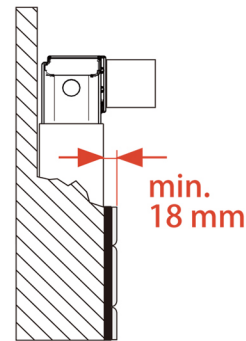
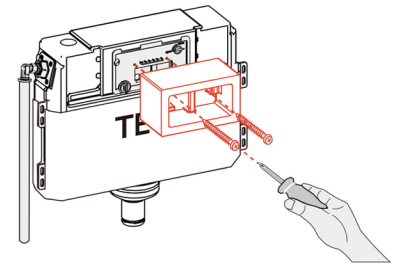
Inlet pipe should be cleaned before connecting with module

1/2"  
30s

**TECE**

komplett vormontiert  
**Eckventil  
geschlossen**

stop valve closed  
vanne d'arrêt fermée  
Zawór dopływowy zamknięty  
Hoekventiel gesloten



**TECE**

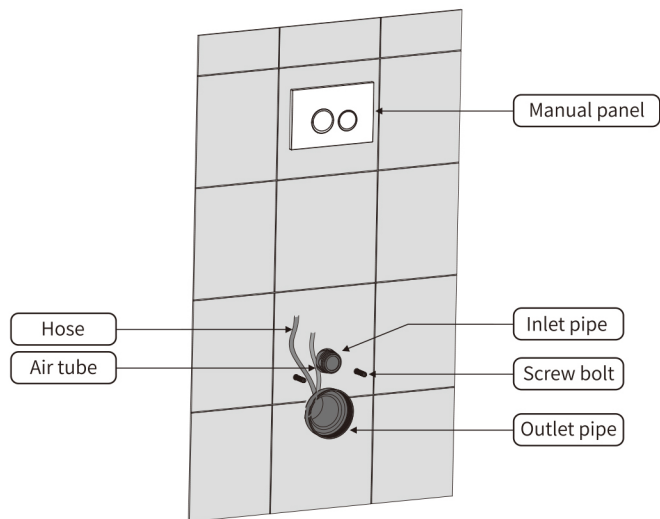
CN031\_601\_00\_e

**2**

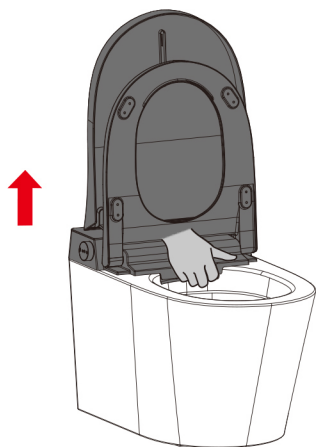
## **Bowl Installation**

Wall mounted toilet installation (concealed cistern)

01 Fix the outlet pipe, screw bolt, inlet pipe and panel on the wall

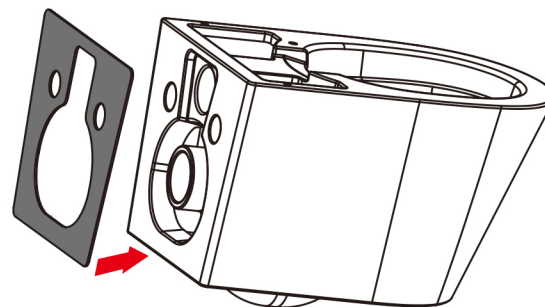


02 Lift the cover up from bottom by hand

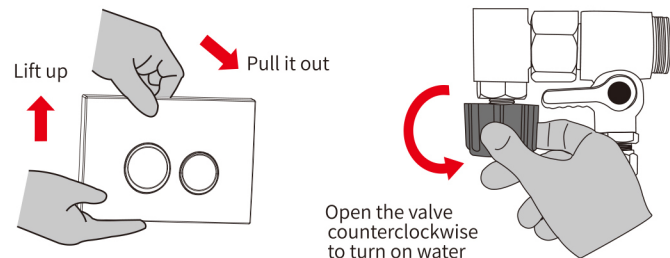


Smart toilet cover installation

03 Tear off the film and stick the backing on the back of toilet

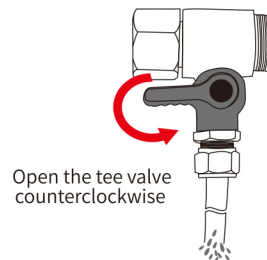


04 Follow the step ①②③④ as below to clean the pipe

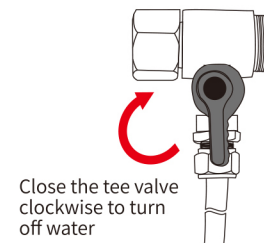


① Open the panel

② Open the valve



③ Open the tee valve to drain the sewage

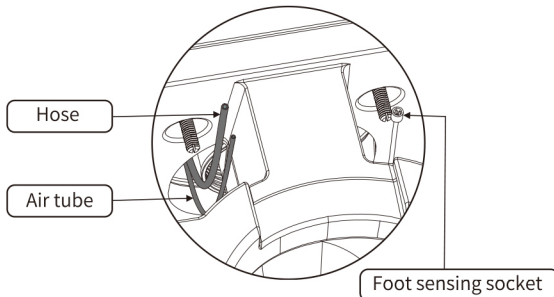
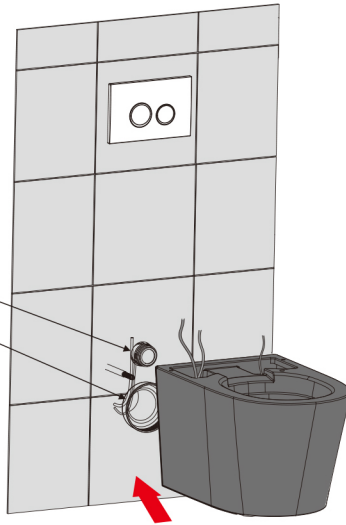


④ Close the valve clockwise

Wall mounted toilet installation (concealed cistern)

05 Fix the toilet on the wall

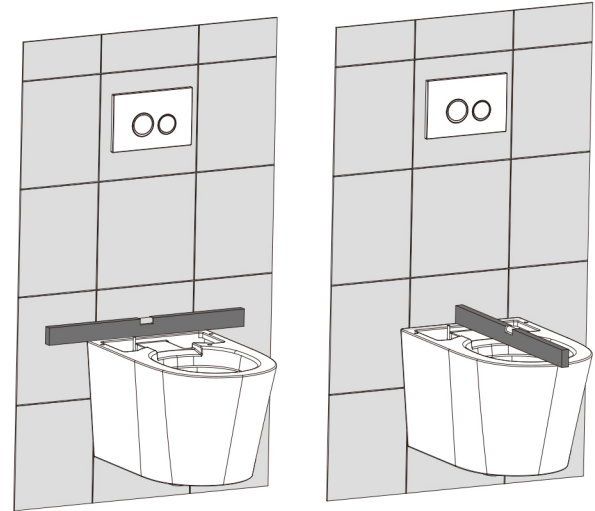
**Attn:** Ensure align the inlet and outlet pipe with same on toilet fix firmly.



1. Pass the hose and air tube through the back of toilet.
2. Align the outlet and inlet hole.
3. Align the screw bolt.
4. Push the toilet in.

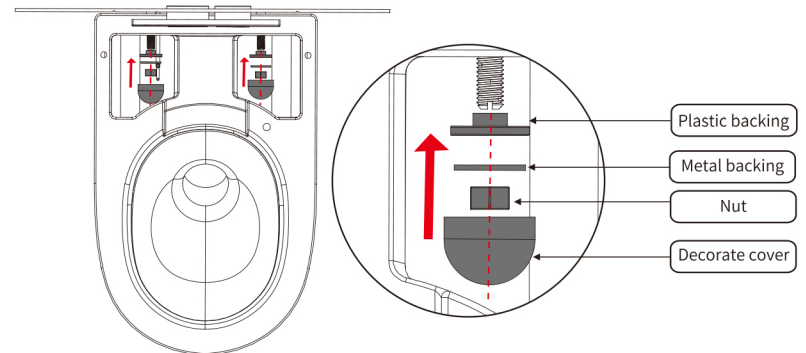
Smart toilet cover installation

06 Follow step 7 after checking and ensure the toilet is horizontal



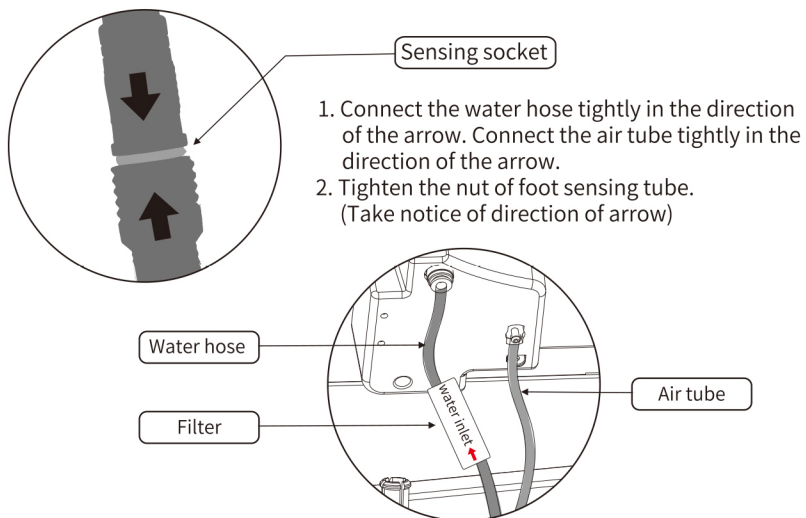
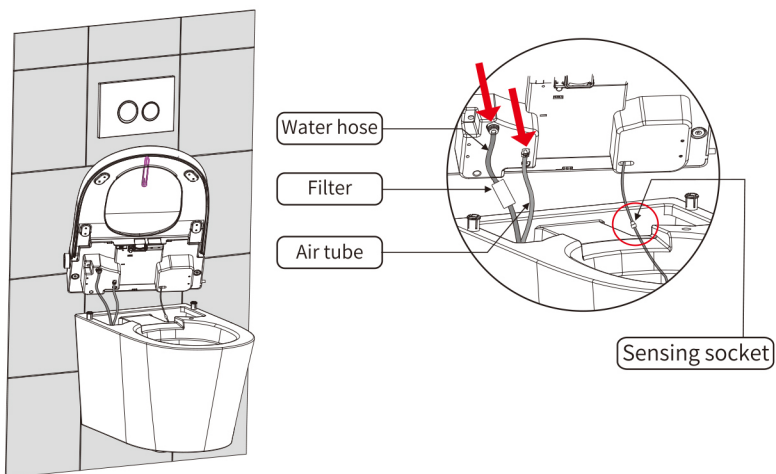
07 Install the plastic backing, metal backing, nut and decorate cover

**Attn:** Try to flush after installation. Check the connecting of inlet and outlet. The installation is done if there is no leaking.



Smart toilet cover installation

08 Connect the air tube, filter, water hose and foot sensing socket



Wall mounted toilet installation

09 Install the cover on the toilet bowl



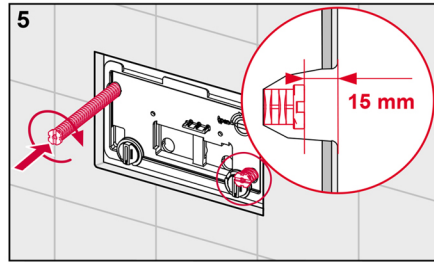
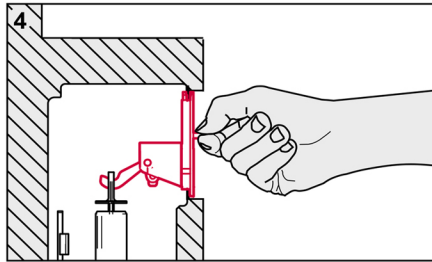
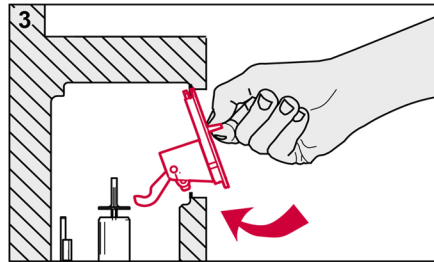
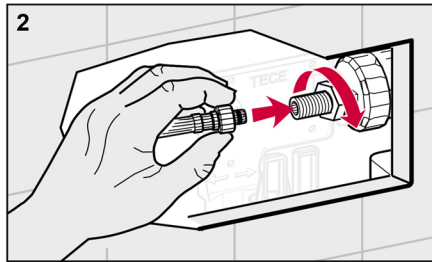
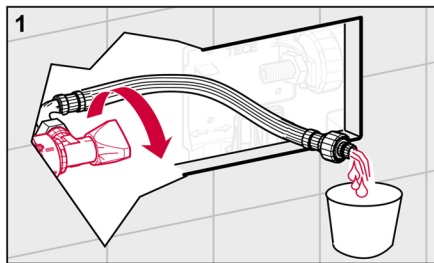
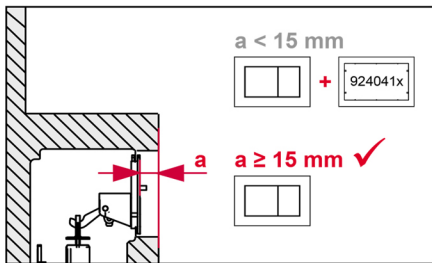
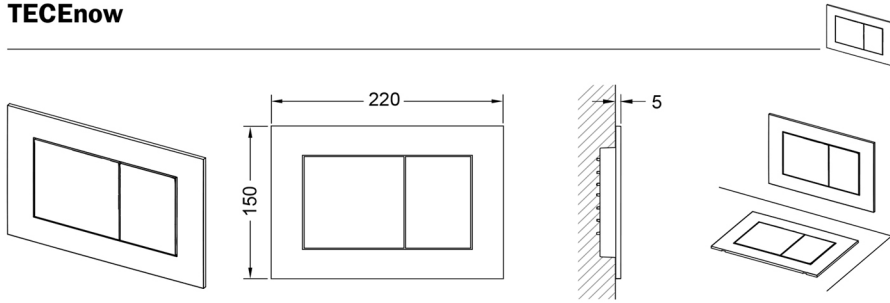
1. Ensure the toilet is fastened.
2. Ensure the water hose, air tube and sensing socket are connected well.
3. Align the fixed lock with fixed hole on toilet cover.
4. Press the cover hard.

10 Installation is done

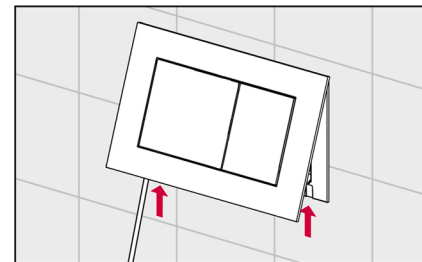
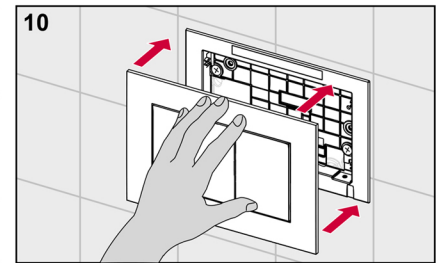
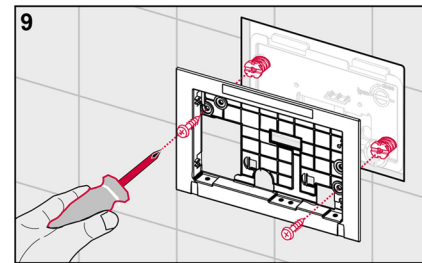
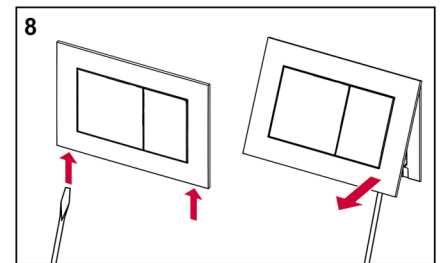
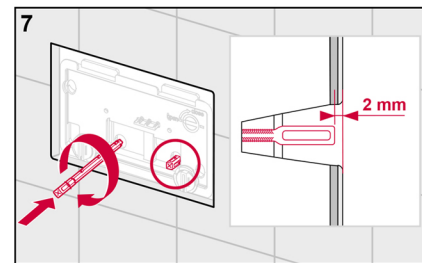
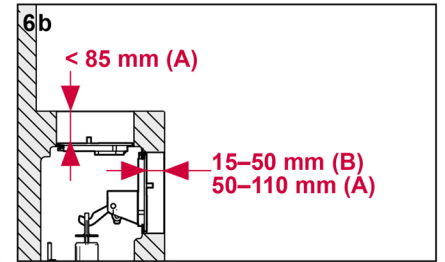
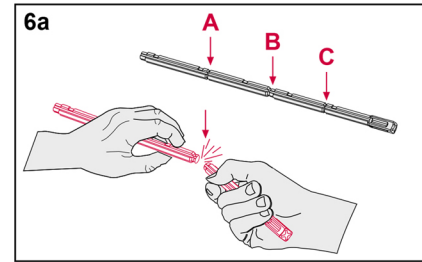


**3**

## **Manual Panel Installation**



TECE:



TECE: