

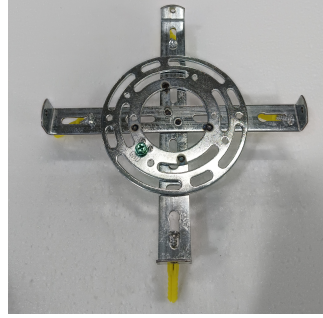
Installation Guide

Picture 1



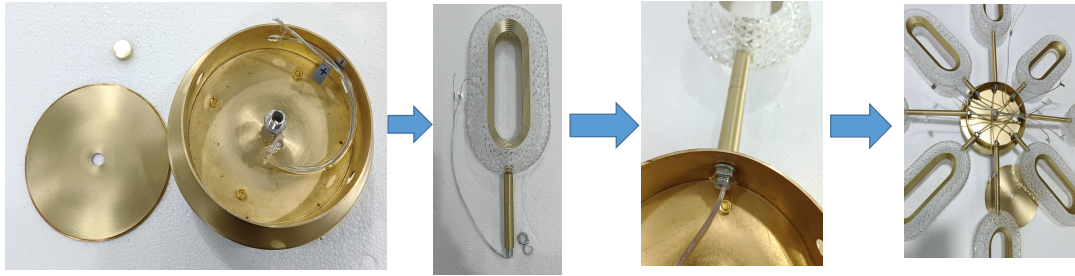
Parts List: as the picture shows.

Picture 2



Step 1: Remove the siding from the chassis and secure to the ceiling

Picture 3



Step 2: Unscrew the round cake to expose the wires inside, and install the lamp head on the chassis as shown in the figure.

Picture 4



Step 3: Connect the lamp head wire and the extension wire of the chassis according to the picture. (the wiring distinguishes the positive and negative poles)

Picture 5



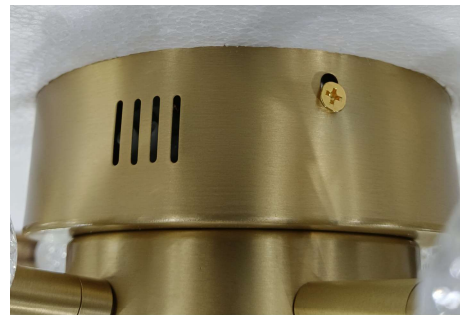
Step 4: Twist the round cake.

Picture 6



Step 5: Connect the power cord to the terminal. (The red line is L, the blue line is N)

Picture 7



Step 6: Fasten the chassis to the pegboard.

Picture 8



Completion.